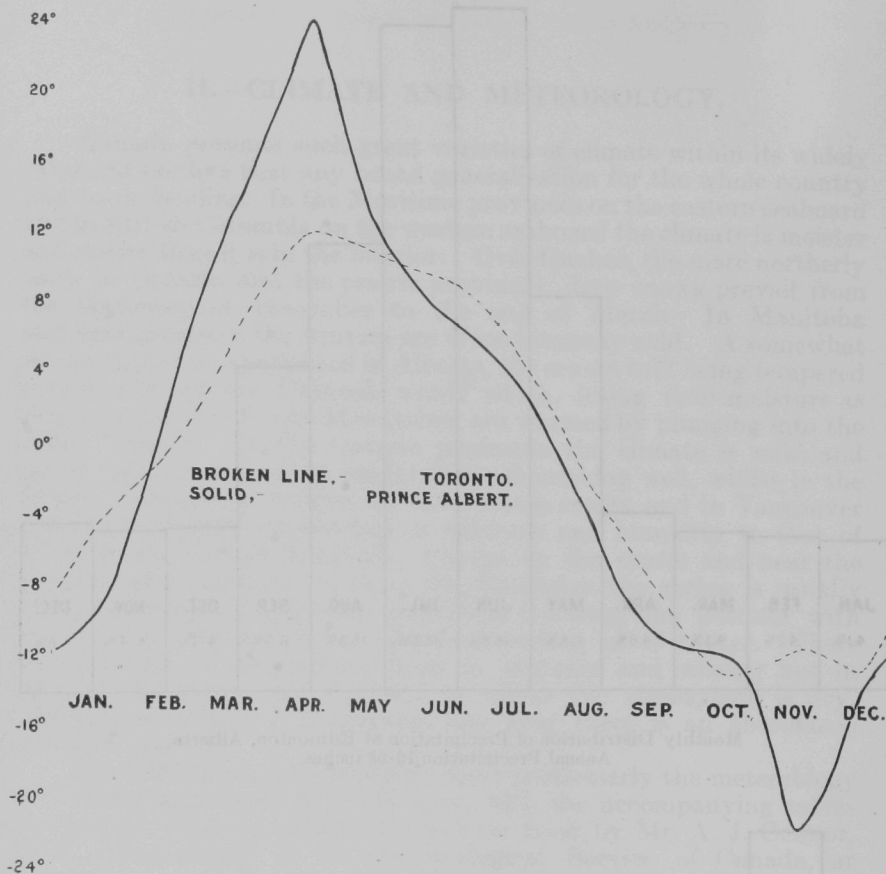


CLIMATE AND METEOROLOGY



Monthly Increase or Decrease in Mean Temperature at Toronto and Prince Albert.

tendency to extremes of heat in the summer and of cold in the winter. This tendency lessens rapidly as the lower levels and the coast are approached.

The outstanding features of the prairie type are the much scantier precipitation and the much more severe cold of winter. How the Northwest provinces are able to produce their great grain crops under these natural difficulties is more readily seen by a reference to the accompanying graphs (see pages 49-50). These show the monthly distribution of precipitation at Edmonton and Toronto and the monthly increase or decrease in the mean temperature at Prince Albert and Toronto. The annual precipitation at Edmonton is less than half that which falls at Toronto; but the greater bulk of it falls in the months of May, June, July and August, *i. e.*, in the growing period. In Toronto, on the other hand,—and that is to say, in the Lake region— a precipitation twice as great is more